



bleiPLUS

Double-sided tin coated lead sheet.

bleiPLUS

Combined strengths of lead and tin

All-rounder for roofs and façades

Lead sheet is one of the most traditional materials used for roofs and façades. Extremely durable, one hundred percent recyclable and offering outstanding cold-forming properties, it has been the material of choice for sustainable construction for centuries.

A host of advantages, one product

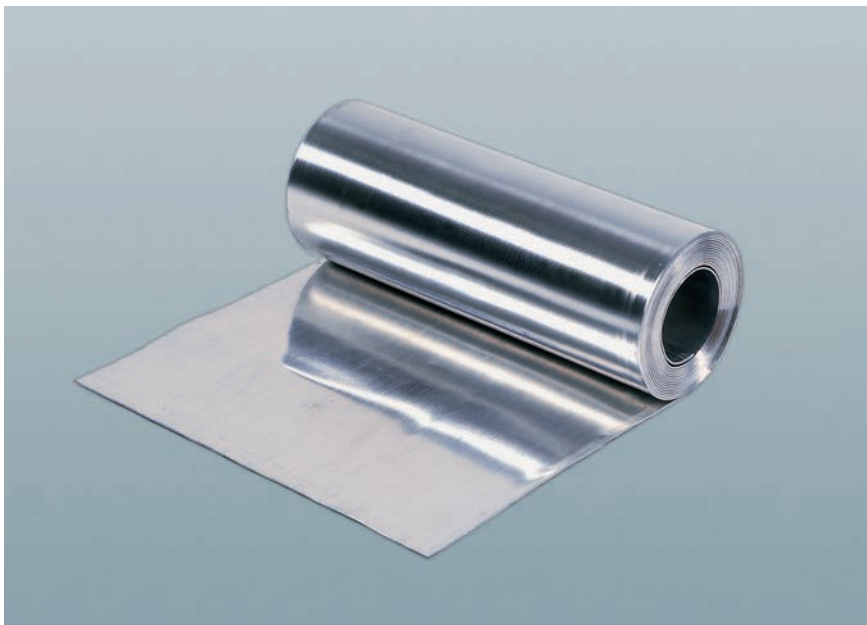
bleiPLUS combines the advantages of lead and tin. The product is as weather-resistant and easy to work as classic lead sheets. At the same time, the tin surface layer on both sides prevents the formation of white streaks.

Practical and high-quality

Over time, the initial shine of the patented product fades to a fine matt finish. bleiPLUS thus helps to create striking, high-quality roof and façade surfaces. Time-consuming and costly patination of the sheets following fitting is eliminated. The tin coating enables the product to be soldered better and more quickly.

Easy to lay

bleiPLUS is suitable for sealing roofs and façades and can also be laid on large surfaces. It is processed in the same manner as classic lead sheets, and can be subjected to all standard seaming techniques as well as soldering and welding.



STANDARD DIMENSIONS

Rolls of approx. 50 kg

1.25 x 1,000 x 3,500 mm

1.50 x 1,000 x 2,900 mm

2.00 x 1,000 x 2,200 mm

Rolls of approx. 25 kg

1.25 x 150 x 11,800 mm

1.25 x 200 x 8,820 mm

1.25 x 250 x 7,055 mm

1.25 x 330 x 5,350 mm

1.25 x 450 x 3,900 mm

1.25 x 500 x 3,500 mm

Rolls of approx. 16.5 kg

1.25 x 330 x 3,530 mm

Rolls of approx. 12.5 kg

1.25 x 250 x 3,530 mm

Rolls of approx. 10 kg

1.25 x 200 x 3,530 mm

Other dimensions and flat sheets available on request.

bleiPLUS is also available in corrugated form.



A step up in service and quality: Röhr + Stolberg is Germany's foremost company in the field of lead processing. Customers benefit from our advice on lead applications and our training courses on lead working. Its long service life, high recycling rate of nearly one hundred percent and the minimal energy consumed in its production make lead the perfect material for sustainable construction.

RÖHR + STOLBERG GmbH

Bruchfeld 52 | 47809 Krefeld
Germany

Tel. +49 (0) 21 51 - 58 92 - 0

Fax +49 (0) 21 51 - 50 02 70

rs-vertrieb@roehr-stolberg.de

www.roehr-stolberg.de



Institut Bauen
und Umwelt e.V.

DIN EN ISO 9001:2008
DIN EN ISO 14001:2004
OHSAS 18001:2007

A plus for the environment –
recyclable lead sheet



Dealer's stamp

