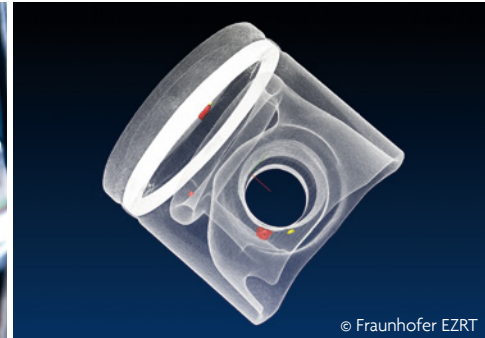




Lead hutches at the ESRF synchrotron. © ESRF/P. Ginter

# Radiation protection

**FOR SAFETY ENGINEERING,  
NON-DESTRUCTIVE MATERIAL TESTING  
AND INDUSTRIAL SYSTEMS**



© Fraunhofer EZRT



**RÖHR + STOLBERG**

# Your partner for radiation protection

From luggage scanners to material testing: The application fields for high-energy, ionising radiation are numerous and varied. In order to reliably protect humans and sensitive technology, Röhr + Stolberg offer individually tailored shielding solutions – precisely customised to your project.

Individual components or complex complete solutions – Röhr + Stolberg has the competence to develop, supplement or fully implement radiation protection projects according to customer specifications. In addition to classic lead products, boron carbide and HDPE are used for shielding of different types of radiation. Low-radiation lead is used for demanding measurement systems. Applications in the fields of safety engineering, non-de-

structive material testing and industrial systems are nearly unlimited: Radiation protection solutions from Röhr + Stolberg protect scanner systems – such as those in airports or customs – as well as systems for material or flow meters, regardless of their size.

Röhr + Stolberg products also reliably protect against electron beams used for welding, cross-linking of plastics or coatings and seed sterilisation.

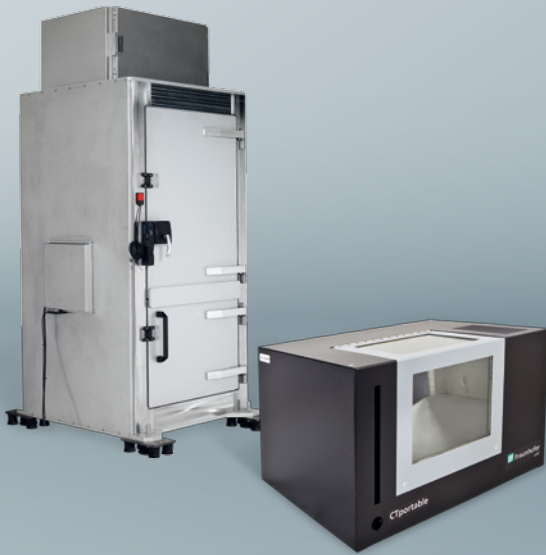
## EXPERTISE MADE IN GERMANY

- Radiation protection solutions including radiation protection calculations
- Development, design, manufacture, installation
- Purchase and rework of used lead
- Joining and soldering technologies
- Bonding technologies – in particular lead bonding and X-Ready
- Machining
- Casting technologies
- Forming processes
- Painting & metal coating

OUR PORTFOLIO

# Products and complete solutions

Radiation protection cabins

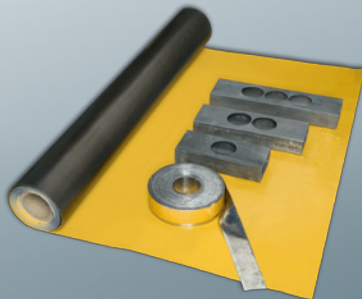


Radiation protection housings



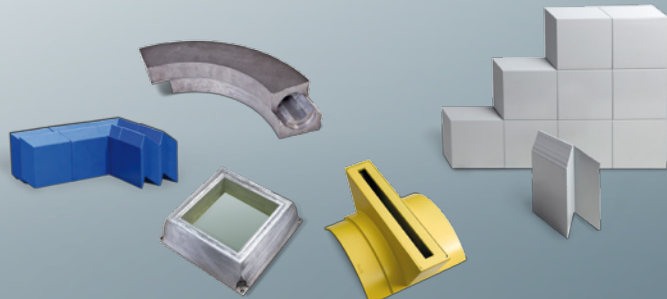
Components

X-Ready product range



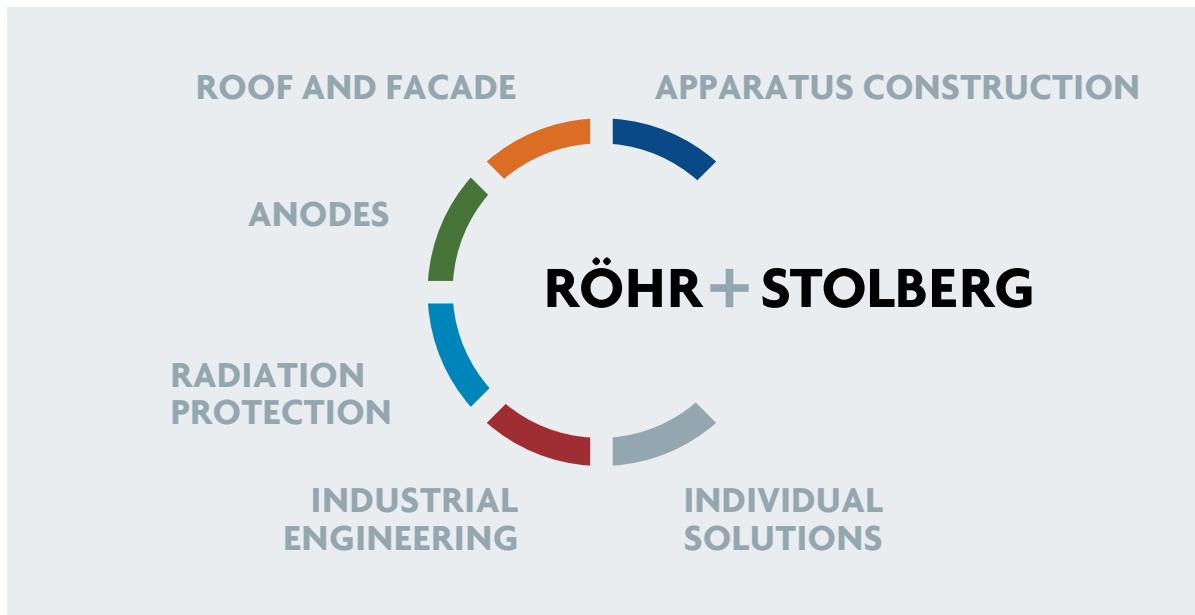
Components

Chevron rails, lead bricks, lead-glass windows, tubes



## FURTHER PRODUCTS

- **Rolled lead sheets**
- **Lead plates**
- **Accessories:** Lead wool, granulate, lead bond
- **Low-activity lead**



## OUR COMMITMENT

# Know-how for people and technology

Röhr + Stolberg is Germany's primary lead processor with more than 100 years of experience and know-how in almost all applications. An integrated quality management system enables achievement of the best production processes, work and environmental standards – for consistently high product quality. Continual innovation, strict hygiene standards and well-qualified staff at the site in Germany guarantee maximum protection of people and technology.

## SUSTAINABILITY

### Complete and certified environmental protection

The Institute Construction and Environment (IBU) e.V. has certified all Röhr + Stolberg rolled lead products with an environmental product declaration to ISO standard 14025. These products consist almost 100% of recycled lead and can be reused to save energy. Recycled lead is also used in all other products where this is allowed by the application.

## SERVICE

### Advice and service for every project

Custom solutions are often needed in order to achieve the best possible results – whether in radiation protection, technical applications or in the construction sector. Röhr + Stolberg engages with its customers and is able to respond flexibly to any requirement. Our application engineers offer customer training and advice either from our base in Krefeld or at the customer site.



A member of CALDER GROUP

**RÖHR + STOLBERG GmbH**  
 Bruchfeld 52 | 47809 Krefeld  
 Tel. +49 (0) 21 51 - 58 92 - 0  
 Fax +49 (0) 21 51 - 50 02 70  
 info@roehr-stolberg.de  
 www.roehr-stolberg.de



DIN EN ISO 9001:2008  
 DIN EN ISO 14001:2004  
 OHSAS 18001:2007