



Anodes

PRODUCTS AND SOLUTIONS



RÖHR + STOLBERG

Maximum expertise in electroplating

Röhr + Stolberg has decades of experience of manufacturing high-grade anodes from lead and lead alloys for use in electroplating.

Anodes are indispensable in electrolysis to produce non-ferrous metals such as copper and zinc. They are also required in the surface finishing of metals, for example in hard chromium plating, galvanising, anodising or pickling metal surfaces. Media containing sulphuric acid are used in electrolysis. These make high demands on the anode casing. Lead alloys are among the few materials that satisfy these demands, making the metal ideally suited to the manufacture of high-quality anodes.

Röhr + Stolberg manufacture anodes to suit the profile of requirements and the customer's specifications. Lead and lead alloy anodes are produced by rolling, casting or extruding.

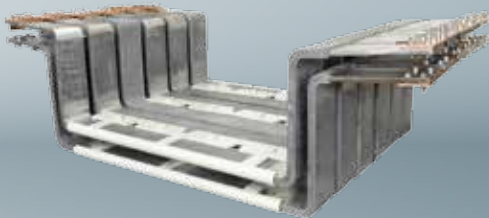
Our portfolio also includes anodes with a homogeneous lead coating and substrate materials such as steel or copper. Depending on the application, we use a wide variety of alloys for anodes, produced for example by adding silver, tin or antimony. Our products are of course supplied ready for use, complete with mountings and power supply from steel or copper. As part of our service we take anodes back for conditioning or repair.

Our production and testing processes are certified in compliance with DIN 28058. As an experienced partner of industry, we provide our customers with tailored advice on how to achieve the optimum result for a specific application.

OUR PORTFOLIO

Products and complete solutions

Lead lined steel anode



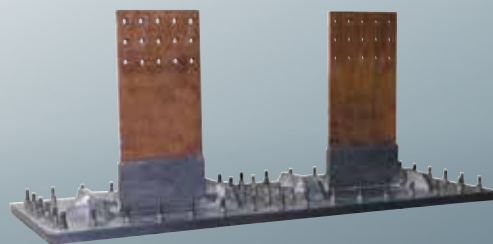
Lead lined steel anode (detail)



Specially designed anode



Anode

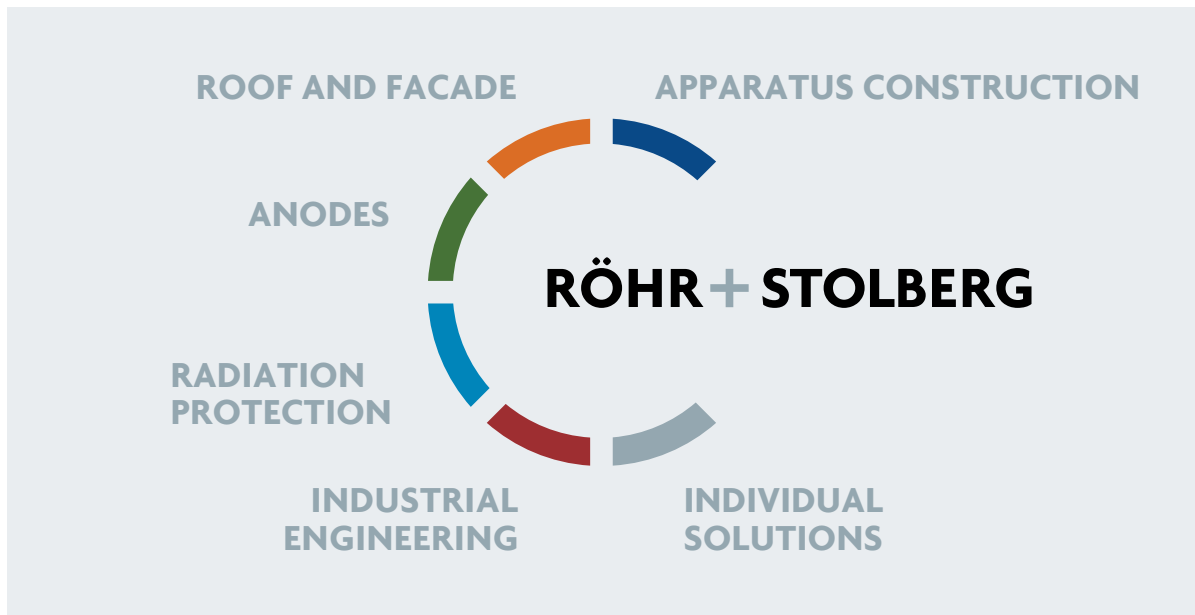


Anodes for hard chromium plating



EXPERTISE MADE IN GERMANY

- Calculation and design of anodes
- Development, design, manufacture
- Taking back and inspection of anodes
- Repair of anodes
- Machining
- Forming processes
- Casting technologies
- Painting and corrosion protection



OUR COMMITMENT

Know-how for people and technology

Röhr + Stolberg is Germany's primary lead processor with more than 100 years of experience and know-how in almost all applications. An integrated quality management system enables achievement of the best production processes, work and environmental standards – for consistently high product quality. Continual innovation, strict hygiene standards and well-qualified staff at the site in Germany guarantee maximum protection of people and technology.

SUSTAINABILITY

Complete and certified environmental protection

The Institute Construction and Environment (IBU) e.V. has certified all Röhr + Stolberg lead sheet products with an environmental product declaration to ISO standard 14025. These products consist almost 100% of recycled lead and can be reused to save energy. Recycled lead is also used in all other products where this is allowed by the application.

SERVICE

Advice and service for every project

Custom solutions are often needed in order to achieve the best possible results – whether in radiation protection, technical applications or in the construction sector. Röhr + Stolberg engages with its customers and is able to respond flexibly to any requirement. Our application engineers offer customer training and advice either from our base in Krefeld or at the customer site.



A member of CALDER GROUP

RÖHR + STOLBERG GmbH
 Bruchfeld 52 | 47809 Krefeld
 Tel. +49 (0) 21 51 - 58 92 - 0
 Fax +49 (0) 21 51 - 50 02 70
 info@roehr-stolberg.de
 www.roehr-stolberg.de



DIN EN ISO 9001:2008
 DIN EN ISO 14001:2004
 OHSAS 18001:2007
 DIN EN ISO 50001:2011